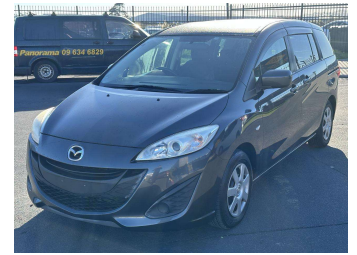


2013 Mazda Premacy 20C



Purchase Price **\$8,900**

Includes GST
Excludes on-road costs of \$595

Finance may be available on this vehicle. Ask one of our friendly staff for more information.

Gain peace of mind with Mechanical Breakdown Insurance. **Ask us how.**

- Top features**
- » ABS Brakes
 - » Air Conditioning
 - » Buttons
 - » Car Stereo
 - » Central Locking
 - » Climate Control
 - » Dark Interior
 - » Digital Dash
 - » Electric Windows
 - » Folding Side Mirrors
 - » Keyless Entry
 - » Power Steering
 - » Reversing Camera
 - » Touch Screen Stereo
 - » Wheel Covers
 - » Winker Mirror

Body Style
5 door, Van

Odometer
62,108 km

Engine
2000 cc

Fuel Type
Petrol


Transmission
Automatic, 2WD

Wheels
Hubcap

VIN
7AT0C133X24115236

Interior
Gray

Safety



Based on 2023 VSRR rating

Reg No.
QZK34

Ext Colour
Gray

History
-

Seats
7 seats, Fabric

CO2 Emissions
★★★★☆
163 grams/km


Energy Economy
★★★★☆☆
Annual fuel cost of \$2,740
7L per 100km

Cost per year is an estimate based on petrol price of \$2.80 per litre and an average distance of 14000 km. Emissions and Energy Economy figures standardised to 3P WLTP.

Stock ID: 1035840



Jan Japan - East Tamaki | Phone 09 972 1204 | Email sales@janjapan.co.nz
10 Progressive Way, East Tāmaki, Auckland 2016, New Zealand
www.janjapan.co.nz



★★★★★
4.29 | 298 reviews