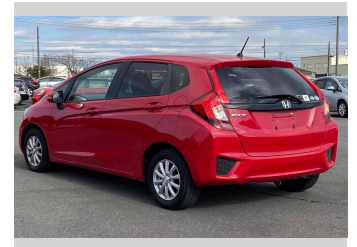
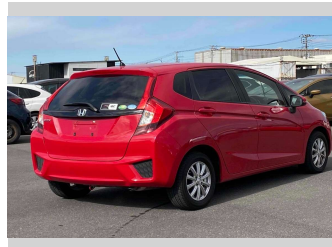


# 2013 Honda Fit 13G-L PACKAGE



**Purchase Price** **\$9,900**

Includes GST  
Excludes on-road costs of \$595

Finance may be available on this vehicle. Ask one of our friendly staff for more information.

Gain peace of mind with Mechanical Breakdown Insurance. **Ask us how.**

- Top features**
- » ABS Brakes
  - » Air Conditioning
  - » Alloys
  - » CD Player
  - » Electric Windows
  - » Keyless Entry
  - » Power Steering
  - » Push Start
  - » Winker Mirror

Body Style  
**5 door, Hatchback**

Odometer  
**26,640 km**

Engine  
**1300 cc**

Fuel Type  
**Petrol**

Transmission  
**Automatic, 2WD**

Wheels  
-

VIN  
-

Interior  
**Gray**

Safety  
-

Reg No.  
-

Ext Colour  
**Red**

History  
-

Seats  
**5 seats**

CO2 Emissions  
-

Energy Economy  
-

VIN  
-

**Stock ID: 14979**



Jan Japan - East Tamaki | Phone 09 972 1204 | Email sales@janjapan.co.nz  
10 Progressive Way, East Tāmaki, Auckland 2016, New Zealand  
www.janjapan.co.nz

★★★★☆  
4.27 | 324 reviews