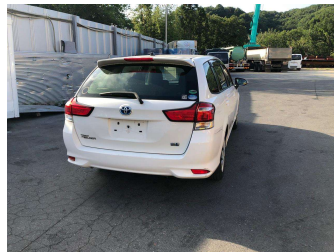
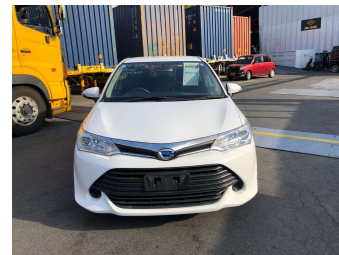
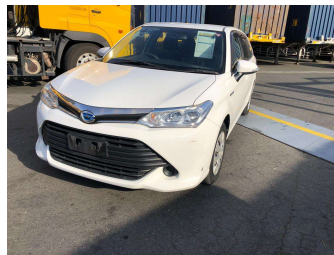


2016 Toyota Corolla Fielder



Purchase Price

\$13,500

Includes GST
Excludes on-road costs of \$595

Finance may be available on this vehicle. Ask one of our friendly staff for more information.

Gain peace of mind with Mechanical Breakdown Insurance. **Ask us how.**

Top features

- » ABS Brakes
- » Air Conditioning
- » Electric Windows
- » Power Steering
- » Spoiler
- » Winker Mirror

Body Style

5 door, Station Wagon

Odometer

92,486 km

Engine

1500 cc, Hybrid

Fuel Type

Hybrid

Transmission

Automatic, 2WD

Wheels

-

VIN

7AT0H607X24034868

Interior

Gray

Safety



Based on 2023 VSRR rating

Reg No.

-

Ext Colour

Pearl White

History

-

Seats

5 seats

CO2 Emissions

★★★★☆

92 grams/km

Energy Economy

★★★★☆☆

**Annual fuel cost of \$1,530
3.9L per 100km**

Cost per year is an estimate based on petrol price of \$2.80 per litre and an average distance of 14000 km. Emissions and Energy Economy figures standardised to 3P WLTP.

Stock ID: 1121675



Jan Japan - East Tamaki | Phone 09 972 1204 | Email sales@janjapan.co.nz
10 Progressive Way, East Tāmaki, Auckland 2016, New Zealand
www.janjapan.co.nz



★★★★☆
4.32 | 281 reviews