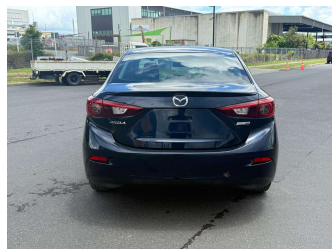
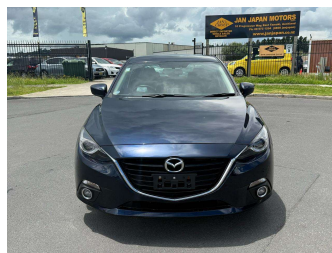


# 2014 Mazda Axela Hybrid S



**Purchase Price**

# \$14,980

Includes GST  
Excludes on-road costs of \$595

Finance may be available on this vehicle. Ask one of our friendly staff for more information.

Gain peace of mind with Mechanical Breakdown Insurance. **Ask us how.**

- Top features**
- » ABS Brakes
  - » Air Conditioning
  - » Electric Windows
  - » Fog Lights
  - » Power Steering

Body Style  
**4 door, Sedan**

Odometer  
**91,828 km**

Engine  
**2000 cc, Hybrid**

Fuel Type  
**Hybrid**

Transmission  
**Automatic, 2WD**

Wheels  
-

VIN  
**7AT0C13JX24105781**

Interior  
**Gray**

Safety



Based on 2024 UCSR rating for 13-19 models

Reg No.

-

Ext Colour  
**Dark Blue**

History

-

Seats  
**5 seats**

CO2 Emissions  
**★★★★☆**  
**97 grams/km**

Energy Economy  
**★★★★☆☆**

**Annual fuel cost of \$1,610**  
**4.1L per 100km**

Cost per year is an estimate based on petrol price of \$2.80 per litre and an average distance of 14000 km. Emissions and Energy Economy figures standardised to 3P WLTP.

**Stock ID: 14238**



Jan Japan - Mt Wellington | Phone 09 278 9643 | Email sales.mtw@janjapan.co.nz  
5 Fraser Road, Mount Wellington, Auckland 1072  
www.janjapan.co.nz