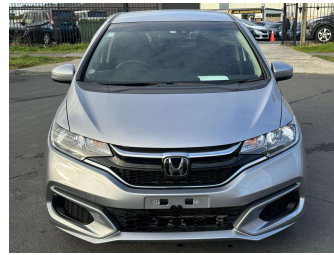


# 2019 Honda Fit Hybrid



Purchase Price

**\$14,500**

Includes GST  
Excludes on-road costs of \$595

Finance may be available on this vehicle. Ask one of our friendly staff for more information.

Gain peace of mind with Mechanical Breakdown Insurance. **Ask us how.**

## Top features

- » ABS Brakes
- » Air Conditioning
- » Alarm
- » Alloys
- » Buttons
- » Car Stereo
- » Central Locking
- » Cruise Control
- » Dark Interior
- » Digital Dash
- » Electric Mirrors
- » Electric Windows
- » Folding Side Mirrors
- » Keyless Entry
- » Lane Departure Warning...
- » Lane Keep Assist
- » Parking Sensors
- » Power Steering

Body Style

**5 door, Hatchback**

Odometer

**91,477 km**

Engine

**1500 cc, Hybrid**

Fuel Type

**Hybrid**

Transmission

**Automatic, 2WD**

Wheels

**Hubcap**

VIN

**7AT08G2YX24343351**

Interior

**Gray**

Safety



Based on 2023 UCSR rating for 14-20 models

Reg No.

-

Ext Colour

**Silver**

History

-

Seats

**5 seats, Fabric**

CO2 Emissions

★★★★☆

**91 grams/km**

Energy Economy

★★★★☆

**Annual fuel cost of \$1,490  
3.8L per 100km**

Cost per year is an estimate based on petrol price of \$2.80 per litre and an average distance of 14000 km. Emissions and Energy Economy figures standardised to 3P WLTP.

**Stock ID: 1078683**



Jan Japan - East Tamaki | Phone 09 972 1204 | Email sales@janjapan.co.nz  
10 Progressive Way, East Tāmaki, Auckland 2016, New Zealand  
www.janjapan.co.nz

