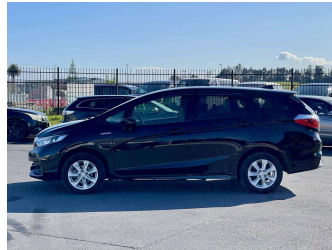


# 2019 Honda Shuttle Hybrid



**Purchase Price**

**\$14,400**

Includes GST  
Excludes on-road costs of \$595

Finance may be available on this vehicle. Ask one of our friendly staff for more information.

Gain peace of mind with Mechanical Breakdown Insurance. **Ask us how.**

- Top features**
- » ABS Brakes
  - » Air Conditioning
  - » Alloys
  - » Car Stereo
  - » Climate Control
  - » Cruise Control
  - » Dark Interior
  - » Digital Dash
  - » Electric Mirrors
  - » Electric Windows
  - » Folding Side Mirrors
  - » Keyless Entry
  - » Power Steering
  - » Push Start
  - » Radar Cruise Control
  - » Reversing Camera
  - » Spoiler
  - » Winker Mirror

Body Style  
**5 door, Station Wagon**

Odometer  
**93,400 km**

Engine  
**1500 cc, Hybrid**

Fuel Type  
**Hybrid**

Transmission  
**Automatic, 4WD**

Wheels  
-

VIN  
**7AT08G1XX24002578**

Interior  
**Gray**

Safety



Based on 2023 VSRR rating

Reg No.

-

Ext Colour  
**Black**

History

-

Seats  
**5 seats**

CO2 Emissions  
**★★★★☆**  
**106 grams/km**

Energy Economy  
**★★★★☆**

**Annual fuel cost of \$1,760**  
**4.5L per 100km**

Cost per year is an estimate based on petrol price of \$2.80 per litre and an average distance of 14000 km. Emissions and Energy Economy figures standardised to 3P WLTP.

**Stock ID: 1101486**