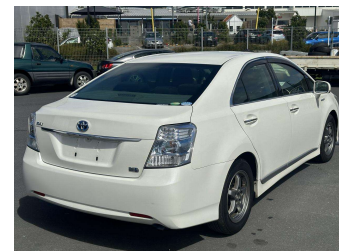
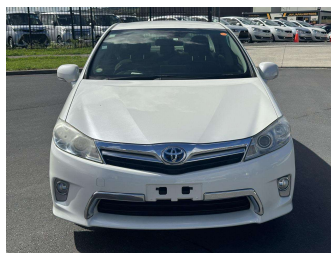


2012 Toyota Sai G



Purchase Price

\$10,550

Includes GST
Excludes on-road costs of \$595

Finance may be available on this vehicle. Ask one of our friendly staff for more information.

Gain peace of mind with Mechanical Breakdown Insurance. **Ask us how.**

- Top features**
- » ABS Brakes
 - » Air Conditioning
 - » Alloys
 - » Car Stereo
 - » Central Locking
 - » Dark Interior
 - » Electric Mirrors
 - » Electric Windows
 - » Fog Lights
 - » Folding Side Mirrors
 - » Power Steering
 - » Push Start
 - » Radar Cruise Control
 - » Reversing Camera
 - » Touch Screen Stereo
 - » Winker Mirror

Body Style
4 door, Sedan

Odometer
90,413 km

Engine
2400 cc, Hybrid

Fuel Type
Hybrid

Transmission
Automatic, 2WD

Wheels
-

VIN
7AT0H661X24055544

Interior
Gray

Safety



Based on 2023 VSRR rating

Reg No.

-

Ext Colour
Pearl White

History

-

Seats
5 seats

CO2 Emissions
★★★★☆
126 grams/km

Energy Economy
★★★★☆☆

Annual fuel cost of \$2,120
5.4L per 100km

Cost per year is an estimate based on petrol price of \$2.80 per litre and an average distance of 14000 km. Emissions and Energy Economy figures standardised to 3P WLTP.

Stock ID: 955453



Jan Japan - East Tamaki | Phone 09 972 1204 | Email sales@janjapan.co.nz
10 Progressive Way, East Tāmaki, Auckland 2016, New Zealand
www.janjapan.co.nz

