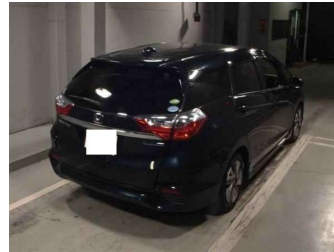
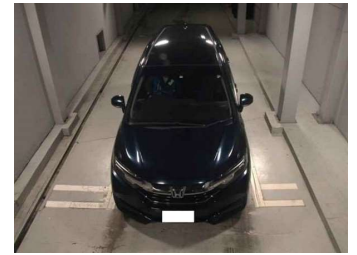
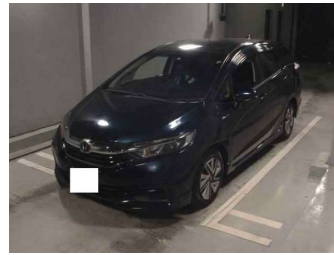


2016 Honda Shuttle Hybrid



Purchase Price **POA**

Includes GST
Excludes on-road costs of \$595

Finance may be available on this vehicle. Ask one of our friendly staff for more information.

Gain peace of mind with Mechanical Breakdown Insurance. **Ask us how.**

- Top features**
- » ABS Brakes
 - » Air Conditioning
 - » Electric Windows
 - » Power Steering
 - » Spoiler
 - » Winker Mirror

Body Style
5 door, Station Wagon

Odometer
91,907 km

Engine
1500 cc, Hybrid

Fuel Type
Hybrid


Transmission
Automatic, 2WD

Wheels
-

VIN
7AT08G2YX24043715

Interior
Gray

Safety



Based on 2024 VSRR rating

Reg No.
-

Ext Colour
Dark Blue

History
-

Seats
5 seats

CO2 Emissions
★★★★☆
91 grams/km


Energy Economy
★★★★☆☆
Annual fuel cost of \$1,490
3.8L per 100km

Cost per year is an estimate based on petrol price of \$2.80 per litre and an average distance of 14000 km. Emissions and Energy Economy figures standardised to 3P WLTP.

Stock ID: 1164224



Jan Japan - East Tamaki | Phone 09 972 1204 | Email sales@janjapan.co.nz
10 Progressive Way, East Tāmaki, Auckland 2016, New Zealand
www.janjapan.co.nz



★★★★☆
4.29 | 311 reviews