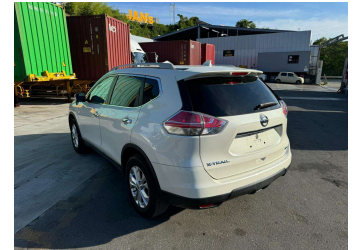
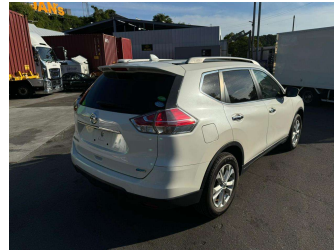
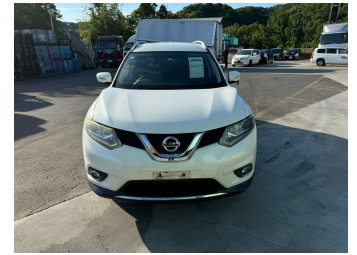


# 2015 Nissan X-Trail 20X



Purchase Price

**\$15,500**

Includes GST  
Excludes on-road costs of \$595

Finance may be available on this vehicle. Ask one of our friendly staff for more information.

Gain peace of mind with Mechanical Breakdown Insurance. **Ask us how.**

## Top features

- » ABS Brakes
- » Air Conditioning
- » Alloys
- » Buttons
- » Car Stereo
- » Central Locking
- » Climate Control
- » Dark Interior
- » Digital Dash
- » Electric Mirrors
- » Electric Windows
- » Fog Lights
- » Folding Side Mirrors
- » Heated Seats
- » Heated Seats
- » Keyless Entry
- » Lane Departure Warning...
- » Lane Keep Assist

Body Style

**5 door, SUV / 4x4**

Odometer

**97,302 km**

Engine

**2000 cc**

Fuel Type

**Petrol**

Transmission

**Automatic, 2WD**

Wheels

-

VIN

**7AT0DH6LX24505126**

Interior

**Gray**

Safety



Based on 2023 UCSR rating for 14-21 models

Reg No.

-

Ext Colour

**Pearl White**

History

-

Seats

**5 seats, Leather**

CO2 Emissions

★★★★☆

**162 grams/km**

Energy Economy

★★☆☆☆

**Annual fuel cost of \$2,700**

**6.9L per 100km**

Cost per year is an estimate based on petrol price of \$2.80 per litre and an average distance of 14000 km. Emissions and Energy Economy figures standardised to 3P WLTP.

**Stock ID: 1107472**



Jan Japan - East Tamaki | Phone 09 972 1204 | Email sales@janjapan.co.nz  
10 Progressive Way, East Tāmaki, Auckland 2016, New Zealand  
www.janjapan.co.nz

