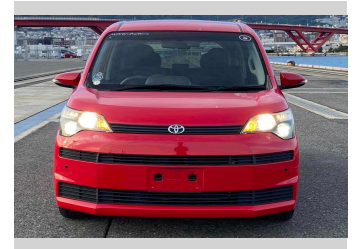


# 2015 Toyota Spade F



Purchase Price

**\$8,000**

Includes GST  
Excludes on-road costs of \$595

Finance may be available on this vehicle. Ask one of our friendly staff for more information.

Gain peace of mind with Mechanical Breakdown Insurance. **Ask us how.**

## Top features

- » ABS Brakes
- » Air Conditioning
- » Electric Windows
- » Power Steering
- » Winker Mirror

Body Style

**4 door, Hatchback**

Odometer

**59,926 km**

Engine

**1500 cc**

Fuel Type

**Petrol**

Transmission

**Automatic, 2WD**

Wheels

-

VIN

**7AT0H662X25165012**

Interior

**Gray**

Safety



Based on 2024 VSRR rating

Reg No.

-

Ext Colour

**Red**

History

-

Seats

**5 seats**

CO2 Emissions

★★★★☆

**134 grams/km**

Energy Economy

★★★★☆☆

**Annual fuel cost of \$2,270**

**5.8L per 100km**

Cost per year is an estimate based on petrol price of \$2.80 per litre and an average distance of 14000 km. Emissions and Energy Economy figures standardised to 3P WLTP.

**Stock ID: 14362**



Jan Japan - East Tamaki | Phone 09 972 1204 | Email sales@janjapan.co.nz  
10 Progressive Way, East Tāmaki, Auckland 2016, New Zealand  
www.janjapan.co.nz



★★★★★  
4.29 | 311 reviews