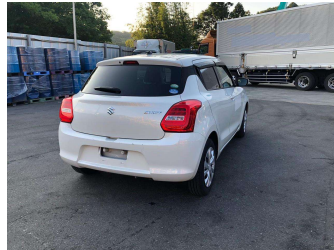


# 2019 Suzuki Swift



**Purchase Price** **\$13,600**

Includes GST  
Excludes on-road costs of \$595

Finance may be available on this vehicle. Ask one of our friendly staff for more information.

Gain peace of mind with Mechanical Breakdown Insurance. **Ask us how.**

**Top features**

- » ABS Brakes
- » Air Conditioning
- » Electric Windows
- » Power Steering
- » Spoiler

Body Style  
**5 door, Hatchback**

Odometer  
**78,920 km**

Engine  
**1200 cc**

Fuel Type  
**Petrol**

Transmission  
**Automatic, 2WD**

Wheels  
-

VIN  
**7AT0GK0CX24134988**

Interior  
**Gray**

Safety



Based on 2023 VSRR rating

Reg No.

-

Ext Colour  
**Pearl White**

History

-

Seats  
**5 seats**

CO2 Emissions  
**★★★★☆**  
**119 grams/km**

Energy Economy  
**★★★★☆☆**

**Annual fuel cost of \$2,000**  
**5.1L per 100km**

Cost per year is an estimate based on petrol price of \$2.80 per litre and an average distance of 14000 km. Emissions and Energy Economy figures standardised to 3P WLTP.

**Stock ID: 1121757**



Jan Japan - East Tamaki | Phone 09 972 1204 | Email sales@janjapan.co.nz  
10 Progressive Way, East Tāmaki, Auckland 2016, New Zealand  
www.janjapan.co.nz

★★★★☆  
4.29 | 311 reviews