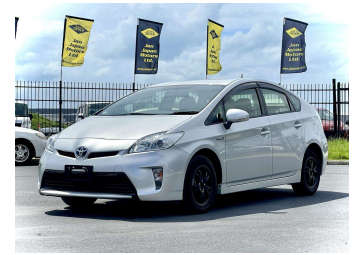
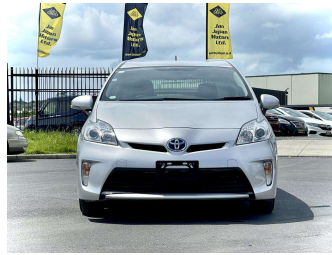


2014 Toyota Prius L



Purchase Price

\$11,400

Includes GST
Excludes on-road costs of \$595

Finance may be available on this vehicle. Ask one of our friendly staff for more information.

Gain peace of mind with Mechanical Breakdown Insurance. **Ask us how.**

- Top features**
- » ABS Brakes
 - » Air Conditioning
 - » Alloys
 - » AUX Input
 - » Car Stereo
 - » Central Locking
 - » Climate Control
 - » Dark Interior
 - » Digital Dash
 - » Electric Mirrors
 - » Electric Windows
 - » Fog Lights
 - » Folding Side Mirrors
 - » Power Steering
 - » Push Start
 - » Reversing Camera
 - » Spoiler
 - » Touch Screen Stereo

Body Style
5 door, Hatchback

Odometer
99,993 km

Engine
1800 cc, Hybrid

Fuel Type
Hybrid

Transmission
Automatic, 2WD

Wheels
-

VIN
7AT0H637X24414547

Interior
Gray

Safety



Based on 2023 UCSR rating for 09-16 models

Reg No.

-

Ext Colour
Silver

History

-

Seats
5 seats

CO2 Emissions
★★★★☆
94 grams/km

Energy Economy
★★★★☆

Annual fuel cost of \$1,570
4L per 100km

Cost per year is an estimate based on petrol price of \$2.80 per litre and an average distance of 14000 km. Emissions and Energy Economy figures standardised to 3P WLTP.

Stock ID: 1002360



Jan Japan - East Tamaki | Phone 09 972 1204 | Email sales@janjapan.co.nz
10 Progressive Way, East Tāmaki, Auckland 2016, New Zealand
www.janjapan.co.nz

★★★★☆
4.32 | 281 reviews