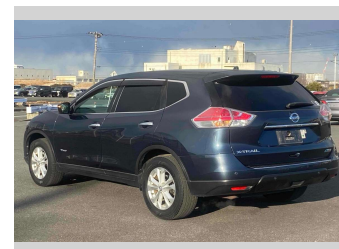
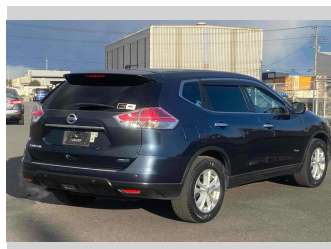
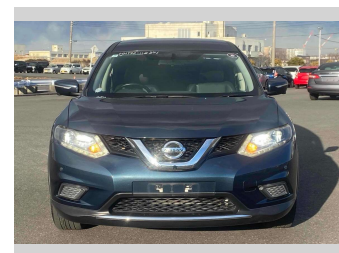
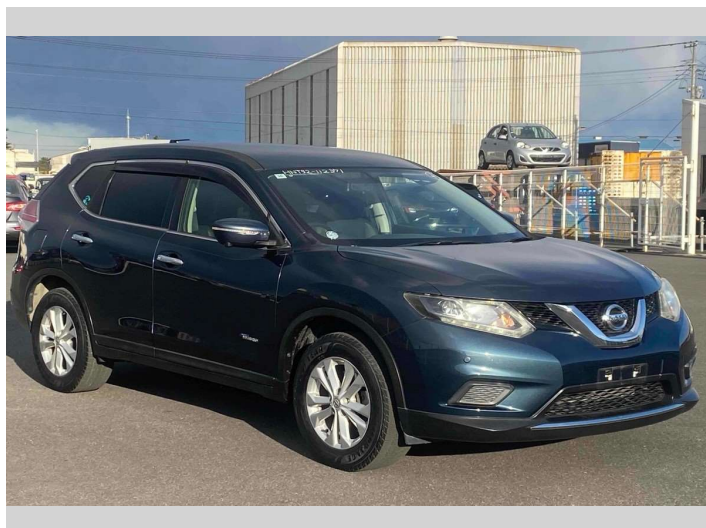


# 2015 Nissan X-Trail 20X Hybrid Emergency Brake



**Purchase Price**

**\$17,900**

Includes GST  
Excludes on-road costs of \$595

Finance may be available on this vehicle. Ask one of our friendly staff for more information.

Gain peace of mind with Mechanical Breakdown Insurance. **Ask us how.**

- Top features**
- » ABS Brakes
  - » Air Conditioning
  - » Electric Windows
  - » Power Steering
  - » Spoiler
  - » Winker Mirror

Body Style  
**5 door, SUV / 4x4**

Odometer  
**91,525 km**

Engine  
**2000 cc, Hybrid**

Fuel Type  
**Hybrid**

Transmission  
**Automatic, 4WD**

Wheels  
-

VIN  
-

Interior  
**Gray**

Safety  
-

Reg No.  
-

Ext Colour  
**Dark Blue**

History  
-

Seats  
**5 seats**

CO2 Emissions  
-

Energy Economy  
-

**Stock ID: 14842**



Jan Japan - East Tamaki | Phone 09 972 1204 | Email sales@janjapan.co.nz  
10 Progressive Way, East Tāmaki, Auckland 2016, New Zealand  
www.janjapan.co.nz

4.27 | 324 reviews