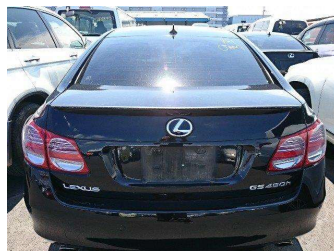


2009 Lexus GS 450H Ver L



Purchase Price

\$11,900

Includes GST
Excludes on-road costs of \$595

Finance may be available on this vehicle. Ask one of our friendly staff for more information.

Gain peace of mind with Mechanical Breakdown Insurance. **Ask us how.**

Top features

- » ABS Brakes
- » Air Conditioning
- » Alloys
- » Electric Windows
- » Power Steering
- » Winker Mirror

Body Style

4 door, Sedan

Odometer

112,483 km

Engine

3450 cc, Hybrid

Fuel Type

Hybrid

Transmission

5-Speed Auto, 2WD

Wheels

-

VIN

7AT0B00GX21020509

Interior

Gray

Safety



Based on 2023 VSRR rating

Reg No.

PES407

Ext Colour

Dark Blue

History

-

Seats

5 seats

CO2 Emissions

★★★★☆☆

206 grams/km

Energy Economy

★★★★☆☆

Annual fuel cost of \$3,370

8.6L per 100km

Cost per year is an estimate based on petrol price of \$2.80 per litre and an average distance of 14000 km. Emissions and Energy Economy figures standardised to 3P WLTP.

Stock ID: 711880



JAN JAPAN MOTORS

Jan Japan - East Tamaki | Phone 09 972 1204 | Email sales@janjapan.co.nz
10 Progressive Way, East Tamaki, Auckland 2016, New Zealand
www.janjapan.co.nz



4.30 | 286 reviews