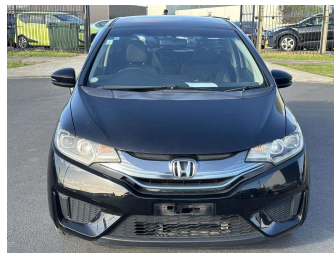


# 2014 Honda Fit Hybrid L Package




**Purchase Price** **\$10,950**

Includes GST  
Excludes on-road costs of \$595

Finance may be available on this vehicle. Ask one of our friendly staff for more information.


Gain peace of mind with Mechanical Breakdown Insurance. **Ask us how.**

- Top features**
- » ABS Brakes
  - » Air Conditioning
  - » Car Stereo
  - » Central Locking
  - » Climate Control
  - » Cruise Control
  - » Dark Interior
  - » Electric Mirrors
  - » Electric Windows
  - » Folding Side Mirrors
  - » Keyless Entry
  - » Lane Departure Warning...
  - » Lane Keep Assist
  - » Power Steering
  - » Push Start
  - » Reversing Camera
  - » Roof Rails
  - » Spoiler

<b>Body Style</b>	<b>5 door, Hatchback</b>	<b>Reg No.</b>	-
<b>Odometer</b>	<b>85,488 km</b>	<b>Ext Colour</b>	<b>Black</b>
<b>Engine</b>	<b>1500 cc, Hybrid</b>	<b>History</b>	-
<b>Fuel Type</b>	<b>Hybrid</b>	<b>Seats</b>	<b>5 seats</b>
<b>Transmission</b>	<b>Automatic, 2WD</b>	<b>CO2 Emissions</b>	★★★★☆ <b>92 grams/km</b>
<b>Wheels</b>	-	<b>Energy Economy</b>	★★★★☆☆
<b>VIN</b>	<b>7AT08G2YX24100916</b>	<b>Annual fuel cost of \$1,530</b>	<b>3.9L per 100km</b>
<b>Interior</b>	<b>Gray</b>	Cost per year is an estimate based on petrol price of \$2.80 per litre and an average distance of 14000 km. Emissions and Energy Economy figures standardised to 3P WLTP.	
<b>Safety</b>		<b>Stock ID: 1108561</b>	
	Based on 2023 UCSR rating for 14-20 models		



Jan Japan - East Tamaki | Phone 09 972 1204 | Email sales@janjapan.co.nz  
10 Progressive Way, East Tāmaki, Auckland 2016, New Zealand  
www.janjapan.co.nz

 ★★★★☆  
4.32 | 281 reviews