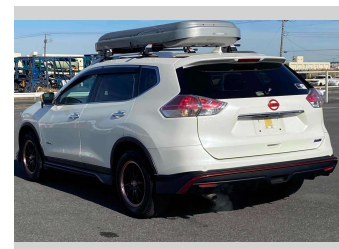
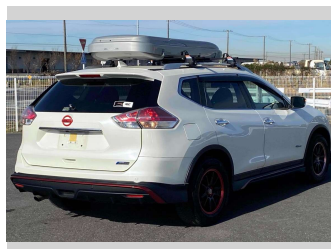
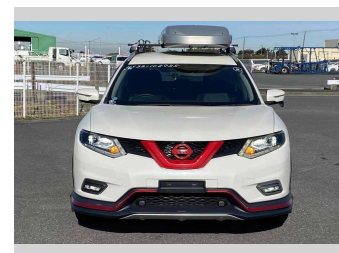
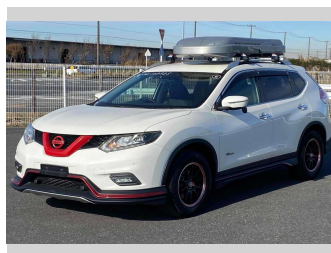
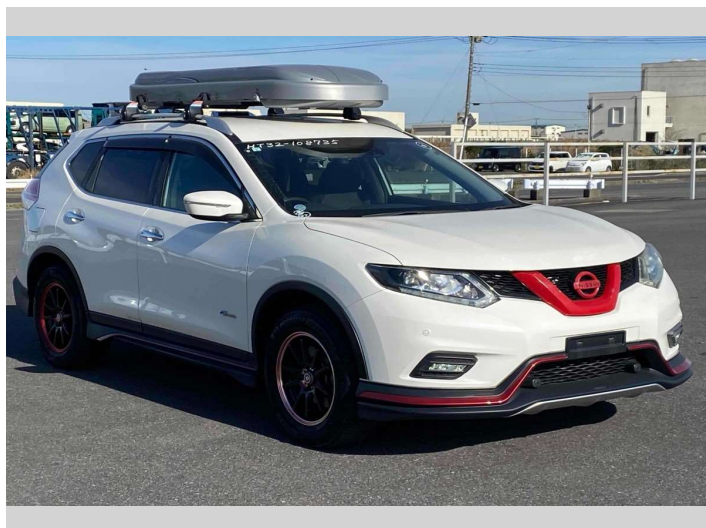


# 2017 Nissan X-Trail 20X HYBRID EMERGENCY



**Purchase Price** **POA**

Includes GST  
Excludes on-road costs of \$595

Finance may be available on this vehicle. Ask one of our friendly staff for more information.

Gain peace of mind with Mechanical Breakdown Insurance. **Ask us how.**

- Top features**
- » ABS Brakes
  - » Air Conditioning
  - » Electric Windows
  - » Fog Lights
  - » Power Steering
  - » Spoiler
  - » Winker Mirror

Body Style  
**5 door, SUV / 4x4**

Odometer  
**79,850 km**

Engine  
**2000 cc, Hybrid**

Fuel Type  
**Hybrid**

Transmission  
**Automatic, 2WD**

Wheels  
-

VIN  
-

Interior  
**Gray**

Safety  
-

Reg No.

-

Ext Colour

**White**

History

-

Seats

**5 seats**

CO2 Emissions

-

Energy Economy

-

**Stock ID: 14648**



Jan Japan - East Tamaki | Phone 09 972 1204 | Email sales@janjapan.co.nz  
10 Progressive Way, East Tāmaki, Auckland 2016, New Zealand  
www.janjapan.co.nz

★★★★☆  
4.29 | 311 reviews