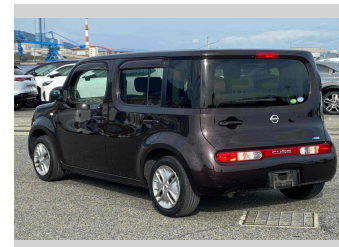
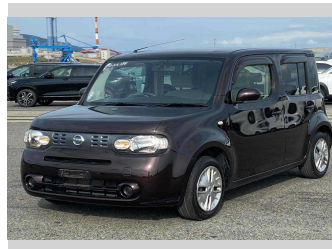


# 2016 Nissan Cube 15X



**Purchase Price** **\$8,700**

Includes GST  
Excludes on-road costs of \$595

Finance may be available on this vehicle. Ask one of our friendly staff for more information.

Gain peace of mind with Mechanical Breakdown Insurance. **Ask us how.**

**Top features**

- » ABS Brakes
- » Air Conditioning
- » Electric Windows
- » Power Steering

Body Style  
**5 door, Hatchback**

Odometer  
**77,788 km**

Engine  
**1500 cc**

Fuel Type  
**Petrol**

Transmission  
**Automatic, 2WD**

Wheels  
-

VIN  
**7AT0DH63X24316394**

Interior  
**Gray**

Safety



Based on 2024 VSRR rating

Reg No.

-

Ext Colour  
**Brown**

History

-

Seats  
**5 seats**

CO2 Emissions  
**★★★★☆**  
**143 grams/km**

Energy Economy  
**★★★★☆☆**

**Annual fuel cost of \$2,430**  
**6.2L per 100km**

Cost per year is an estimate based on petrol price of \$2.80 per litre and an average distance of 14000 km. Emissions and Energy Economy figures standardised to 3P WLTP.

**Stock ID: 14166**



Jan Japan - East Tamaki | Phone 09 972 1204 | Email sales@janjapan.co.nz  
10 Progressive Way, East Tamaki, Auckland 2016, New Zealand  
www.janjapan.co.nz

★★★★☆  
4.29 | 311 reviews