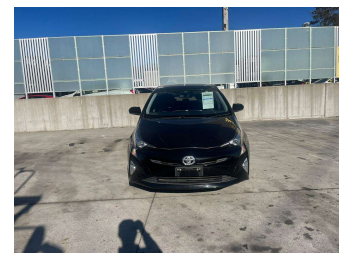
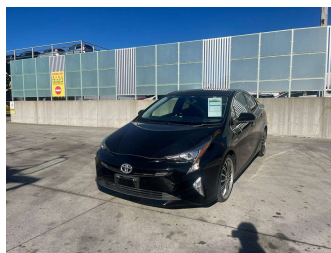


2016 Toyota Prius S



Purchase Price **\$18,900**
Includes GST
Excludes on-road costs of \$595

Finance may be available on this vehicle. Ask one of our friendly staff for more information.

Gain peace of mind with Mechanical Breakdown Insurance. **Ask us how.**

Top features

- » ABS Brakes
- » Air Conditioning
- » Electric Windows
- » Fog Lights
- » Power Steering

Body Style
5 door, Hatchback

Odometer
92,111 km

Engine
1800 cc, Hybrid

Fuel Type
Hybrid

Transmission
Automatic, 2WD

Wheels
-

VIN
-

Interior
Gray

Safety



Based on 2023 VSRR rating

Reg No.

-

Ext Colour
Black

History

-

Seats
5 seats

CO2 Emissions
★★★★☆
85 grams/km

Energy Economy
★★★★☆

Annual fuel cost of \$1,410
3.6L per 100km

Cost per year is an estimate based on petrol price of \$2.80 per litre and an average distance of 14000 km. Emissions and Energy Economy figures standardised to 3P WLTP.

Stock ID: 987105



Jan Japan - East Tamaki | Phone 09 972 1204 | Email sales@janjapan.co.nz
10 Progressive Way, East Tāmaki, Auckland 2016, New Zealand
www.janjapan.co.nz

