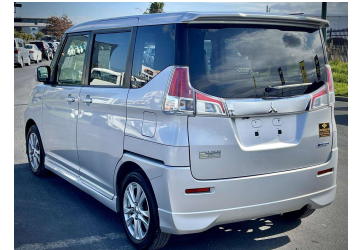


# 2016 Mitsubishi Delica D2



**Purchase Price** **\$9,800**

Includes GST  
Excludes on-road costs of \$595

Finance may be available on this vehicle. Ask one of our friendly staff for more information.

Gain peace of mind with Mechanical Breakdown Insurance. **Ask us how.**

- Top features**
- » ABS Brakes
  - » Air Conditioning
  - » Alloys
  - » Car Stereo
  - » Dark Interior
  - » Digital Dash
  - » Electric Mirrors
  - » Electric Windows
  - » Fog Lights
  - » Folding Side Mirrors
  - » Keyless Entry
  - » Power Steering
  - » Push Start
  - » Reversing Camera
  - » Spoiler
  - » Touch Screen Stereo
  - » Winker Mirror

Body Style  
**5 door, Van**

Odometer  
**89,245 km**

Engine  
**1200 cc**

Fuel Type  
**Petrol**


Transmission  
**Automatic, 2WD**

Wheels  
-

VIN  
**7AT0CJ0PX23103040**

Interior  
**Gray**

Safety



Based on 2023 VSRR rating

Reg No.  
-

Ext Colour  
**Silver**

History  
-

Seats  
**5 seats**

CO2 Emissions  
**★★★★☆**  
**106 grams/km**


Energy Economy  
**★★★★☆**  
**Annual fuel cost of \$1,760**  
**4.5L per 100km**

Cost per year is an estimate based on petrol price of \$2.80 per litre and an average distance of 14000 km. Emissions and Energy Economy figures standardised to 3P WLTP.

**Stock ID: 930503**



Jan Japan - East Tamaki | Phone 09 972 1204 | Email sales@janjapan.co.nz  
10 Progressive Way, East Tamaki, Auckland 2016, New Zealand  
www.janjapan.co.nz



★★★★★  
4.28 | 309 reviews