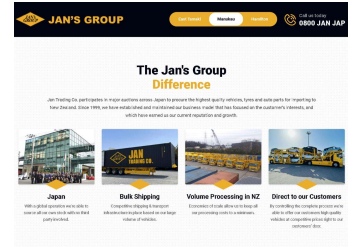
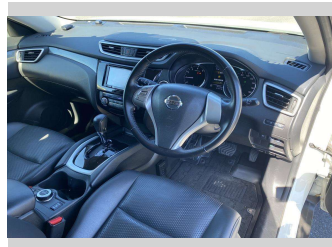
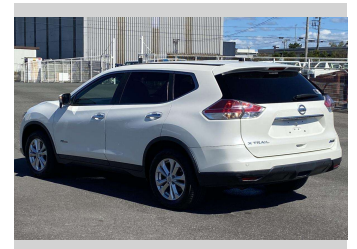
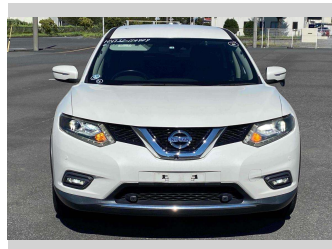


2016 Nissan X-Trail 20S HV Emergency Brake



Purchase Price **POA**

Includes GST
Excludes on-road costs of \$595

Finance may be available on this vehicle. Ask one of our friendly staff for more information.

Gain peace of mind with Mechanical Breakdown Insurance. **Ask us how.**

- Top features**
- » ABS Brakes
 - » Air Conditioning
 - » Alloys
 - » Car Stereo
 - » Dark Interior
 - » Electric Windows
 - » Fog Lights
 - » Power Steering
 - » Push Start
 - » Reversing Camera
 - » Touch Screen Stereo
 - » Winker Mirror

Body Style
5 door, SUV / 4x4

Odometer
85,344 km

Engine
2000 cc, Hybrid

Fuel Type
Hybrid

Transmission
Automatic, 4WD

Wheels
-

VIN
-

Interior
Gray

Safety
-

Reg No.
-

Ext Colour
Pearl White

History
-

Seats
5 seats, Leather

CO2 Emissions
-

Energy Economy
-

Stock ID: 13954



Jan Japan - East Tamaki | Phone 09 972 1204 | Email sales@janjapan.co.nz
10 Progressive Way, East Tamaki, Auckland 2016, New Zealand
www.janjapan.co.nz

